



University of Venda

IN/01/2023

**CONSTRUCTION OF A BOUNDARY WALL AT SIBASA RESIDENCES  
FOR THE UNIVERSITY OF VENDA  
(CIDB GRADING 4GB or higher)**

**VOLUME 2 OF 2**

<b>BSC MEMBERS</b>	<b>SIGNATURE</b> .....	<b>DATE OF APPROVAL</b>
<b>Chairperson SCM</b>		
<b>Technical (End User) Legal Department</b>		

**PROCUREMENT DOCUMENT**

(Based on NEC3 Engineering and Construction Short Contract)

Date of Issue: 30 MARCH 2023

**Issued by:**

Director Facilities Management

**University of the Venda, Thohoyandou**

**Name of tenderer:** .....

**Telephone Number:** .....

**Email Address:**

**Fax Number:** .....

**Cellphone Number:** .....

**Closing date: AS PER TENDER INVITATION**

## **PREAMBLES FOR TRADES**

### **1. MODEL PREAMBLES FOR TRADES**

The "Specification of Materials and Methods to be used - PW371" as issued by the Department of Public Works shall apply and shall be deemed to be incorporated herein.

The Bidders are referred to the above-mentioned document for the full description of materials to be used and work to be executed.

A copy of the above-mentioned document is available at the offices of the Principal Agent for inspection.

### **2. VARIATIONS AND/OR ADDITIONS TO MODEL PREAMBLES FOR TRADES**

- a. All work to be done in accordance to the detailed specification as per the Engineers and Architects drawings.
- b. Where variations and/or additions to Model Preambles differ from Clauses contained in the "Specification of Materials and Methods to be used - PW371", the variations and/or additions to Preambles shall take precedence.

### **3. MATERIALS AND WORKMANSHIP**

Materials and workmanship shall be the best of their respective kinds. Only undamaged materials may be used in the works. Work shall be to the satisfaction of the Architect/Engineer and shall be executed in accordance with good building practice and the relevant Manufacturer's instruction. Where the term "approved" is used in connection with materials and workmanship, it shall mean that such materials shall be to the approval, instructions or choice of the Architect.

### **4. STANDARD SPECIFICATIONS**

Materials and Workmanship shall comply with the Standard Building Regulations (SBR), National Building Regulations (NBR), SABS1200, the specifications and codes of practice of the South African Bureau of Standards, and CSIR recommendations. In cases of variance, these "Specification of Materials and Methods to be used - PW371" and any supplementary preambles thereto shall have precedence over the above-mentioned regulations, specifications and codes of practice. In cases of variance between the SBR and NBR, the NBR shall have precedence.

The latest issues of the above-mentioned regulations, specifications and codes of practice, as well as those of any other specifying body, to which reference is made, shall be applicable.

References to standard specifications and/or building regulations in these "Specification of Materials and Methods to be used - PW371" are for the information of the Contractor and shall in no way relieve him of his obligations under the Contract.

**SECTION 1: PRELIMINARIES AND**  
**GENERAL**

**CONSTRUCTION OF BOUNDARY WALL AT  
SIBASA RESIDENCES FOR THE UNIVERSITY OF VENDA**

Item  
No

Quantity

Rate

Amount

**SECTION NO. 1**

**BILL NO. 1**

**PRELIMINARIES**

**PRELIMINARIES**

- i) The NEC3 Engineering and Construction Short Contract (Second edition of June 2005 with amendments of April 2013) in conjunction with the Contract Data is taken to be incorporated herein
- ii) The tenderer is deemed to have taken cognizance of the above mentioned documents for the full intent and meaning of each clause. These clauses are referred to by clause number and heading only
- iii) The amount of Preliminaries to be included in each monthly payment certificate shall be assessed as an amount prorated to the value of the work duly executed in the same ratio as the preliminaries bears to the total of prices excluding any contingency sum and the amount for Preliminaries
- iv) Where the initial contract period is extended, the monthly charge shall be calculated on the basis as set out in (iii) but taking into account the revised period for completing the works

**Carried to Collection**

R

Section No. 1  
PRELIMINARIES AND GENERAL  
Bill No. 1  
PRELIMINARIES AND GENERAL

**CONSTRUCTION OF BOUNDARY WALL AT  
SIBASA RESIDENCES FOR THE UNIVERSITY OF VENDA**

v) The amount or the items of the Preliminaries are adjusted to take account of the theoretical financial effect which changes in time or value (or both) have on this section. Such adjustments shall be based on adjustments in the following categories as recorded in the Bills of Quantities:

- a) an amount which is not varied, namely fixed
- b) an amount which is varied in proportion to the contract value, namely value related; and
- c) an amount which is varied in proportional to the construction period as compared to the initial construction period excluding revisions to the construction period for which the contractor is not entitled to adjustment in terms of the contract, namely Time Related

Where no provision is made in Bills of Quantities to indicate which of the three categories in (v) apply or where no selection is made, the adjustments shall be based on the following breakdown:

- a) 10 percent is Fixed
- b) 15 percent is Value related
- c) 75 percent is Time Related

The adjustments of the Preliminaries shall apply notwithstanding the actual employment of resources in the execution of the works. The contract value used for the adjustment of the Preliminaries shall exclude any contingency sum and the amount for Preliminaries

**CONDITIONS OF CONTRACT**

**GENERAL**

**Action (clause 10)**

Actions (clause 10.1)

Fixed Related

Item

Value Related

Item

Time Related

Item

**Carried to Collection**

R

Section No. 1  
PRELIMINARIES AND GENERAL  
Bill No. 1  
PRELIMINARIES AND GENERAL

**CONSTRUCTION OF BOUNDARY WALL AT  
SIBASA RESIDENCES FOR THE UNIVERSITY OF VENDA**

<b><u>Identified and defined terms (clause 11)</u></b>			
Condition of contract (clause 11.1)			
	Fixed Related	Item	
	Value Related	Item	
	Time Related	Item	
Defined terms (clause 11.2)			
	Fixed Related	Item	
	Value Related	Item	
	Time Related	Item	
<b><u>Law (clause 12)</u></b>			
Law (clause 12.1 - 12.4)			
	Fixed Related	Item	
	Value Related	Item	
	Time Related	Item	
<b><u>Communications (clause 13)</u></b>			
Communications (clause 13.1 - 13.2)			
	Fixed Related	Item	
	Value Related	Item	
	Time Related	Item	
	<b>Carried to Collection</b>		R
Section No. 1 PRELIMINARIES AND GENERAL Bill No. 1 PRELIMINARIES AND GENERAL			

**CONSTRUCTION OF BOUNDARY WALL AT  
SIBASA RESIDENCES FOR THE UNIVERSITY OF VENDA**

<b><u>The Employer's authority and delegation (clause 14)</u></b>			
The Employer's authority and delegation (clause 14.1 - 14.4)			
	Fixed Related	Item	
	Value Related	Item	
	Time Related	Item	
<b><u>Access to the site and provision of services (clause 15)</u></b>			
Access to the site and provision of services (clause 15.1 - 15.2)			
	Fixed Related	Item	
	Value Related	Item	
	Time Related	Item	
<b><u>Early Warning (clause 16)</u></b>			
Early Warning (clause 16.1 - 16.6)			
	Fixed Related	Item	
	Value Related	Item	
	Time Related	Item	
<b><u>THE CONTRACTOR'S MAIN RESPONSIBILITIES</u></b>			
<b><u>Providing the Works (clause 20)</u></b>			
Providing the Works (clause 20.1 - 20.2)			
	<b>Carried to Collection</b>		
Section No. 1			
PRELIMINARIES AND GENERAL			
Bill No. 1			
PRELIMINARIES AND GENERAL			
			R

**CONSTRUCTION OF BOUNDARY WALL AT  
SIBASA RESIDENCES FOR THE UNIVERSITY OF VENDA**

	Fixed Related	Item	
	Value Related	Item	
	Time Related	Item	
<b><u>Subcontracting and people (clause 21)</u></b>			
Subcontracting and people (clause 21.1 - 21.3)			
	Fixed Related	Item	
	Value Related	Item	
	Time Related	Item	
<b><u>Access for the Employer (clause 22)</u></b>			
Access for the Employer (clause 22.1)			
	Fixed Related	Item	
	Value Related	Item	
	Time Related	Item	
<b><u>TIME</u></b>			
<b><u>Starting and Completion (clause 30)</u></b>			
Starting date (clause 30.1)			
	Fixed Related	Item	
	Value Related	Item	
	Time Related	Item	
Completion date (clause 30.2)			
	<b>Carried to Collection</b>		R
Section No. 1 PRELIMINARIES AND GENERAL Bill No. 1 PRELIMINARIES AND GENERAL			





**CONSTRUCTION OF BOUNDARY WALL AT  
SIBASA RESIDENCES FOR THE UNIVERSITY OF VENDA**

	Time Related	Item	
<b><u>Correcting Defects (Clause 41)</u></b>			
Correcting Defects (Clause 41.1 - 41.4)			
	Fixed Related	Item	
	Value Related	Item	
	Time Related	Item	
<b><u>Uncorrected Defects (clause 42)</u></b>			
Uncorrected Defects (clause 42.1)			
	Fixed Related	Item	
	Value Related	Item	
	Time Related	Item	
<b><u>Repairs (Clause 43)</u></b>			
Repairs (Clause 43.1)			
	Fixed Related	Item	
	Value Related	Item	
	Time Related	Item	
<b><u>PAYMENT</u></b>			
	<b>Carried to Collection</b>		R
Section No. 1 PRELIMINARIES AND GENERAL Bill No. 1 PRELIMINARIES AND GENERAL			

**CONSTRUCTION OF BOUNDARY WALL AT  
SIBASA RESIDENCES FOR THE UNIVERSITY OF VENDA**

<b><u>Assessing the amount due (clause 50)</u></b>				
Assessing the amount due (clause 50.1 - 50.7)				
	Fixed Related	Item		
	Value Related	Item		
	Time Related	Item		
<b><u>Payment (clause 51)</u></b>				
Payment (clause 51.1 - 51.2)				
	Fixed Related	Item		
	Value Related	Item		
	Time Related	Item		
<b><u>COMPENSATION EVENTS</u></b>				
<b><u>Compensation events (clause 60)</u></b>				
Compensation events (clause 60.1 - 60.2)				
	Fixed Related	Item		
	Value Related	Item		
	Time Related	Item		
	<b>Carried to Collection</b>		R	
Section No. 1 PRELIMINARIES AND GENERAL Bill No. 1 PRELIMINARIES AND GENERAL				

CONSTRUCTION OF BOUNDARY WALL AT  
SIBASA RESIDENCES FOR THE UNIVERSITY OF VENDA

**Notifying compensation events (clause 61)**

Notifying compensation events (clause 61.1 - 61.5)

Fixed Related

Item

Value Related

Item

Time Related

Item

**Quotation for compensation events (clause 62)**

Quotation for compensation events (clause 62.1 - 62.6)

Fixed Related

Item

Value Related

Item

Time Related

Item

**Assessing compensation events (clause 63)**

Assessing compensation events (clause 63.1 - 63.10)

Fixed Related

Item

Value Related

Item

Time Related

Item

**TITLE**

**Carried to Collection**

R

Section No. 1  
PRELIMINARIES AND GENERAL  
Bill No. 1  
PRELIMINARIES AND GENERAL

**CONSTRUCTION OF BOUNDARY WALL AT  
SIBASA RESIDENCES FOR THE UNIVERSITY OF VENDA**

<b><u>Objects and materials within the site (clause 70)</u></b>			
Objects and materials within the site (clause 70.1 - 70.2)			
	Fixed Related	Item	
	Value Related	Item	
	Time Related	Item	
<b><u>INDEMNITY, INSURANCE AND LIABILITY</u></b>			
<b><u>Limitation of liability (clause 80)</u></b>			
Limitation of liability (clause 80.1)			
	Fixed Related	Item	
	Value Related	Item	
	Time Related	Item	
<b><u>Indemnities (clause 81)</u></b>			
Indemnities (clause 81.1- 81.3)			
	Fixed Related	Item	
	Value Related	Item	
	Time Related	Item	
	<b>Carried to Collection</b>		R
Section No. 1 PRELIMINARIES AND GENERAL Bill No. 1 PRELIMINARIES AND GENERAL			

**CONSTRUCTION OF BOUNDARY WALL AT  
SIBASA RESIDENCES FOR THE UNIVERSITY OF VENDA**

<b><u>Insurance cover (clause 82)</u></b>			
Insurance cover (clause 82.1)			
	Fixed Related	Item	
	Value Related	Item	
	Time Related	Item	
<b><u>TERMINATION AND DISPUTE RESOLUTION</u></b>			
<b><u>Termination and reasons for termination (clause 90)</u></b>			
Termination and reasons for termination (clause 90.1 - 90.5)			
	Fixed Related	Item	
	Value Related	Item	
	Time Related	Item	
<b><u>Procedures on termination (clause 91)</u></b>			
Procedures on termination (clause 91.1)			
	Fixed Related	Item	
	<b>Carried to Collection</b>		R
Section No. 1 PRELIMINARIES AND GENERAL Bill No. 1 PRELIMINARIES AND GENERAL			

**CONSTRUCTION OF BOUNDARY WALL AT  
SIBASA RESIDENCES FOR THE UNIVERSITY OF VENDA**

	Value Related	Item	
	Time Related	Item	
<b><u>Payment on termination (clause 92)</u></b>			
Procedures on termination (clause 92.1 - 92.3)			
	Fixed Related	Item	
	Value Related	Item	
	Time Related	Item	
<b><u>Dispute Resolution (clause 93)</u></b>			
Dispute Resolution (clause 93.1)			
	Fixed Related	Item	
	Value Related	Item	
	Time Related	Item	
The Adjudicator (clause 93.2)			
	Fixed Related	Item	
	Value Related	Item	
	Time Related	Item	
The Adjudication (clause 93.3)			
	Fixed Related	Item	
	Value Related	Item	
	<b>Carried to Collection</b>		R
Section No. 1 PRELIMINARIES AND GENERAL Bill No. 1 PRELIMINARIES AND GENERAL			

**CONSTRUCTION OF BOUNDARY WALL AT  
SIBASA RESIDENCES FOR THE UNIVERSITY OF VENDA**

	Time Related	Item	
Review by the Tribunal (clause 93.4)			
	Fixed Related	Item	
	Value Related	Item	
	Time Related	Item	
<b><u>ADDITIONAL CONDITIONS OF CONTRACT CLAUSES</u></b>			
Tax invoices (clause Z1)			
	Fixed Related	Item	
	Value Related	Item	
	Time Related	Item	
Communications (clause Z2)			
	Fixed Related	Item	
	Value Related	Item	
	Time Related	Item	
Notification of a compensation event (clause Z3)			
	Fixed Related	Item	
	Value Related	Item	
	Time Related	Item	
Acts or omissions by mandatories (clause Z4)			
	Fixed Related	Item	
	Value Related	Item	
	Time Related	Item	
	<b>Carried to Collection</b>		
Section No. 1 PRELIMINARIES AND GENERAL Bill No. 1 PRELIMINARIES AND GENERAL			R



**CONSTRUCTION OF BOUNDARY WALL AT  
SIBASA RESIDENCES FOR THE UNIVERSITY OF VENDA**

Insurance claims (clause Z5)			
	Fixed Related	Item	
	Value Related	Item	
	Time Related	Item	
Insurance cover taken out by the contractor (clause Z6)			
	Fixed Related	Item	
	Value Related	Item	
	Time Related	Item	
Transfer of rights (clause Z7)			
	Fixed Related	Item	
	Value Related	Item	
	Time Related	Item	
Retention (clause Z8)			
	Fixed Related	Item	
	Value Related	Item	
	Time Related	Item	
Price-Adjustment for inflation - Based on date of Tender Submission (clause Z9)			
	Fixed Related	Item	
	Value Related	Item	
	Time Related	Item	
	<b>Carried to Collection</b>		R
Section No. 1 PRELIMINARIES AND GENERAL Bill No. 1 PRELIMINARIES AND GENERAL			

**CONSTRUCTION OF BOUNDARY WALL AT  
SIBASA RESIDENCES FOR THE UNIVERSITY OF VENDA**

**Priced contract with bill of quantities - This contract is based on priced contract with Bills of Quantities (clause Z10)**

Priced contract with bill of quantities - This contract is based on priced contract with Bills of Quantities (clause Z10.1 - Z10.5)

Fixed Related

Item

Value Related

Item

Time Related

Item

Damages to existing services (clause Z11)

Fixed Related

Item

Value Related

Item

Time Related

Item

Performance bond (clause Z12)

Fixed Related

Item

Value Related

Item

Time Related

Item

**CONTRACT DATA**

Contractual Requirements as stated elsewhere in the document

**ESTABLISHMENT OF FACILITIES ON THE SITE**

**Facilities for Project Manager**

Furnished offices (In no 1)

**Carried to Collection**

R

Section No. 1  
PRELIMINARIES AND GENERAL  
Bill No. 1  
PRELIMINARIES AND GENERAL

**CONSTRUCTION OF BOUNDARY WALL AT  
SIBASA RESIDENCES FOR THE UNIVERSITY OF VENDA**

	Fixed Related	Item	
	Value Related	Item	
	Time Related	Item	
Name boards (In no 1)			
	Fixed Related	Item	
	Value Related	Item	
	Time Related	Item	
Offices and storage sheds			
	Fixed Related	Item	
	Value Related	Item	
	Time Related	Item	
<b><u>Facilities for the contractor</u></b>			
Living accommodation			
	Fixed Related	Item	
	Value Related	Item	
	Time Related	Item	
Ablution and latrine facilities			
	Fixed Related	Item	
	Value Related	Item	
	Time Related	Item	
Tools and Equipments			
	Fixed Related	Item	
	Value Related	Item	
	<b>Carried to Collection</b>		R
Section No. 1 PRELIMINARIES AND GENERAL Bill No. 1 PRELIMINARIES AND GENERAL			

**CONSTRUCTION OF BOUNDARY WALL AT  
SIBASA RESIDENCES FOR THE UNIVERSITY OF VENDA**

	Time Related	Item	
Water supplies, electric power, communication, dealing with water and access			
	Fixed Related	Item	
	Value Related	Item	
	Time Related	Item	
Other fixed charge obligations			
	Fixed Related	Item	
	Value Related	Item	
	Time Related	Item	
Removal of site establishment			
	Fixed Related	Item	
	Value Related	Item	
	Time Related	Item	
<b><u>Occupational Health and safety</u></b>			
Allow for compliance to Occupational Health and safety specifications including, OHS testing of personnel before commencement and after completion of project, safety equipment and safety officer.			
	Fixed Related	Item	
	Value Related	Item	
	Time Related	Item	
Allow for compliance with all COVID 19 Regulations and Requirements			
	Fixed Related	Item	
	<b>Carried to Collection</b>		R
Section No. 1 PRELIMINARIES AND GENERAL Bill No. 1 PRELIMINARIES AND GENERAL			

**CONSTRUCTION OF BOUNDARY WALL AT  
SIBASA RESIDENCES FOR THE UNIVERSITY OF VENDA**

Value Related	Item	
Time Related	Item	
<b>Carried to Collection</b>		R
Section No. 1 PRELIMINARIES AND GENERAL Bill No. 1 PRELIMINARIES AND GENERAL		

**CONSTRUCTION OF BOUNDARY WALL AT  
SIBASA RESIDENCES FOR THE UNIVERSITY OF VENDA**

Section No. 1

PRELIMINARIES AND GENERAL

Bill No. 1

PRELIMINARIES AND GENERAL

**COLLECTION**

Total Brought Forward from Page No.

**Page  
No**

**Amount**

1

2

3

4

5

6

7

8

9

10

11

12

13

14

15

16

17

18

**Carried to Final Summary**

R

Section No. 1

PRELIMINARIES AND GENERAL

Bill No. 1

PRELIMINARIES AND GENERAL

## **SECTION 2: EXTERNAL WORKS**

CONSTRUCTION OF BOUNDARY WALL AT  
SIBASA RESIDENCES FOR THE UNIVERSITY OF VENDA

Item  
No

Quantity

Rate

Amount

**SECTION NO. 2**

**BILL NO. 1**

**FOUNDATIONS**

The contractor is referred to the Specification of Materials and Methods to be used (PW371 - A) as issued by the Department of Public Works

**SUPPLEMENTARY PREAMBLES**

Nature of ground

The nature of the ground is assumed to be sandy weathered granite, therefore "earth", but possibly interspersed with "hard rock"

Excavation for working space in rock

Notwithstanding clause 11 page 8 of the Standard System of Measuring Building Work, excavation for working space in rock will be measured in cubic metres to the extent executed and given as "extra over" bulk excavation or trench and hole excavation as the case may be

Carting away of excavated material

Descriptions of carting away of excavated material shall be deemed to include loading excavated material onto trucks directly from the excavations or, alternatively, from stock piles situated on the building site

Filling

Notwithstanding the reference to prescribed multiple handling in clause 1 page 6 of the Standard System of Measuring Building Work, prices for filling and backfilling shall include for all selection and any multiple handling of material

**ALTERATIONS**

Carried to Collection

R

Section No. 2  
EXTERNAL WORKS  
Bill No. 1  
BOUNDARY WALL



CONSTRUCTION OF BOUNDARY WALL AT  
SIBASA RESIDENCES FOR THE UNIVERSITY OF VENDA

**REMOVAL OF EXISTING WORK:**

Note:

NATURE OF WORK: Tenderers are advised to visit the site and to satisfy themselves as to the nature and extent of the work to be done and provide in their tenders any items not specifically mentioned which they may deem necessary for the proper completion of the work.

DIMENSIONS The Contractor is advised to take all dimensions affecting the existing buildings on the site, as he will be held solely responsible for all new work being of the correct size.

PIPES, ETC Special care is to be taken not to interfere unnecessarily with any supply pipes or other piping that may be met with and found necessary to disconnect or cut, are to be effectively stopped off and any new connections that may be necessary are to be made with proper fittings and to the satisfaction of the Project Manager to whom due notice must be given of any alterations to the existing services.

OLD MATERIALS from the The Contractor should allow for removing of rubble from site on daily basis, failing which the client might stop the construction until the site has been cleaned. None of the old stock bricks from the pulling down are to be re-used for any new work. Materials to be handed over to the Client should be kept safely and handed over to the Client Representative who shall sign for all materials received.

MATERIALS, ETC The materials to be used and work to be done to be similar in all respects to that described for new work insofar as they concur. All work in making good is to be properly jointed to the existing.

CREDITS, ETC. Old materials from the pulling down are to become the property of the Contractor who shall allow credit as provided for in the summary at the end of these Bills of Quantities. The old materials and all rubbish to be immediately carted away and the site left clean and unencumbered.

**Carried to Collection**

Section No. 2  
EXTERNAL WORKS  
Bill No. 1  
BOUNDARY WALL

R

**CONSTRUCTION OF BOUNDARY WALL AT  
SIBASA RESIDENCES FOR THE UNIVERSITY OF VENDA**

**DEMOLITIONS, ETC.**

**REMOVAL OF EXISTING FENCE**

Removal of steel palisade fence, etc.

1	Removal of palisade fence approximately 1800mm high inclusive of posts, digging up of foundations, bases and backfilling of holes and leaving site in a good conditions suitable for construction of new fence	m	466
---	--	---	-----

**EARTHWORKS**

**SITE CLEARANCE ETC**

Site clearance

2	Digging up and removing rubbish, debris, vegetation, hedges, shrubs and trees not exceeding 200mm girth, bush, etc	m2	670
---	--	----	-----

**EXCAVATIONS**

Excavation in earth not exceeding 2m deep

3	Trenches	m3	240
4	Holes	m3	84

Extra over all excavations for carting away

5	Surplus material from excavations and/or stock piles on site to a dumping site to be located by the contractor	m3	251
---	--	----	-----

Risk of collapse of excavations

6	Sides of trench and hole excavations not exceeding 1,5m deep	m2	939
---	--	----	-----

Keeping excavations free of water

7	Keeping excavations free of water		Item
---	-----------------------------------	--	------

**Carried to Collection**

R

Section No. 2  
EXTERNAL WORKS  
Bill No. 1  
BOUNDARY WALL

**CONSTRUCTION OF BOUNDARY WALL AT  
SIBASA RESIDENCES FOR THE UNIVERSITY OF VENDA**

<b><u>FILLING ETC</u></b>		
<u>Earth filling obtained from the excavations and/or prescribed stock piles on site, compacted to 93% Mod AASHTO density</u>		
8	Backfilling to trenches, holes, etc	m3 73
<u>Earth filling of G7 material supplied by the contractor, compacted to 95% Mod AASHTO density</u>		
9	Backfilling to trenches not exceeding 1000mm wide to form platforms for concrete strip footings (e/m)	m3 97
<u>Compaction of surfaces</u>		
10	Rip and scarify ground level to a depth of 150mm and consolidate to 90% mod. AASHTO density	m2 324
<u>Prescribed density tests on filling</u>		
11	"Mod. AASHTO Density" test	No 60
<b><u>SOIL POISONING</u></b>		
<u>Soil insecticide to be executed with SABS compliance by a firm of specialists under a 5 year guarantee</u>		
12	To bottoms and sides of trenches etc	m2 1 423
<u>Weedkiller mixed in accordance to supplier's specifications</u>		
13	To bottoms and sides of trenches etc	m2 1 423
<b><u>CONCRETE, FORMWORK &amp; REINFORCEMENT</u></b>		
<b><u>UNREINFORCED CONCRETE CAST AGAINST EXCAVATED SURFACES</u></b>		
<u>15MPa/19mm concrete</u>		
14	Surface blinding under footings and bases	m3 16
<b>Carried to Collection</b>		
Section No. 2 EXTERNAL WORKS Bill No. 1 BOUNDARY WALL		R

**CONSTRUCTION OF BOUNDARY WALL AT  
SIBASA RESIDENCES FOR THE UNIVERSITY OF VENDA**

**REINFORCED CONCRETE CAST AGAINST  
EXCAVATED SURFACES**

30Mpa/19mm concrete

15	Bases	m3	25
16	Strip footings	m3	62

**TEST CUBES**

17	Allow for preparing a set of three concrete strength test cubes, each size 150 x 150 x 150mm, sending them to an approved Testing Laboratory for testing and paying all charges in connection therewith.	No	30
----	--	----	----

**REINFORCEMENT**

Mild steel reinforcement to structural concrete work

18	10mm Diameter bars	t	3.10
----	--------------------	---	------

**WATERPROOFING**

Gundle USB Green co ex 250µm damp proof membrane under concrete surface beds to SANS mark 952-1985 type C laid with minimum 150mm overlaps and sealed with Gunplas pressure sensitive tape.

19	Under concrete strip footings and bases	m2	324
----	---	----	-----

**MASONRY**

**MASONRY**

Brickwork of NFP bricks in class II mortar

20	Piers	m3	108
21	Piers in foundations	m3	15
22	One brick walls	m2	1 244
23	One brick walls in foundations	m2	154

**Carried to Collection**

Section No. 2  
EXTERNAL WORKS  
Bill No. 1  
BOUNDARY WALL

R

**CONSTRUCTION OF BOUNDARY WALL AT  
SIBASA RESIDENCES FOR THE UNIVERSITY OF VENDA**

**BRICKWORK SUNDRIES**

Brickwork reinforcement

24	150mm Wide reinforcement built in horizontally	m	6 293
25	150mm Wide reinforcement built in horizontally (in foundattions)	m	2 166

**MOVEMENT JOINTS ETC**

Expansion joints with bitumen impregnated softboard between vertical concrete surfaces

26	10mm Joints exceeding 300mm high	m	535
27	10mm Joints exceeding 300mm high in foundations	m	82

**JOINT SEALANTS ETC**

Silicone sealing compound including backing cord, bond breaker, primer, etc

28	3 x 10mm In vertical expansion joints including raking out expansion joint filler as necessary	m	1 070
29	3 x 10mm In vertical expansion joints including raking out expansion joint filler as necessary in foundations	m	163

**FACE BRICKWORK**

Face bricks (Purchase price of R7 000,00/1000 VAT excl. delivered to site) pointed with recessed horizontal and vertical joints

30	Extra over brickwork for face brickwork	m2	2 484
	<u>Brick-on-edge header course coping, sills, etc of face bricks ( Purchase price R10 000,00 / 1000 VAT excl. delivered to site) pointed with recessed joints on all exposed faces</u>		
31	Extra over brickwork for face brickwork (piers)	m2	723

**Carried to Collection**

Section No. 2  
EXTERNAL WORKS  
Bill No. 1  
BOUNDARY WALL

R

**CONSTRUCTION OF BOUNDARY WALL AT  
SIBASA RESIDENCES FOR THE UNIVERSITY OF VENDA**

32	Extra over brickwork for horizontal corbelled band two (2) courses high, 85mm projection on first band and 115mm projection on second band, corbelling on one (1) side pointed on face and soffits	m	330
33	Extra over brickwork for horizontal corbelled band two (2) courses high, 85mm projection on first band and 115mm projection on second band, corbelling on both sides pointed on face and soffits	m	130

**METALWORK**

**SUNDRY STEELWORK**

Gates to external doors

34	Sliding gate size 3500 x 2125mm high (PC Amount R25 000-00 each VAT excl. supplied and installed to site by Specialists)	No	2
----	--	----	---

**ELECTRICAL INSTALLATION**

**ELECTRIC FENCE**

35	Electrical fencing (PC Amount R175-00/m supplied and installed by an approved Specialist)	m	466
----	---	---	-----

**Carried to Collection**

R

Section No. 2  
EXTERNAL WORKS  
Bill No. 1  
BOUNDARY WALL

**CONSTRUCTION OF BOUNDARY WALL AT  
SIBASA RESIDENCES FOR THE UNIVERSITY OF VENDA**

Section No. 2

EXTERNAL WORKS

Bill No. 1

BOUNDARY WALL

**COLLECTION**

Total Brought Forward from Page No.

**Page  
No**

**Amount**

20

21

22

23

24

25

26

**Carried Forward to Summary of Section No. 2**

R

Section No. 2  
EXTERNAL WORKS  
Bill No. 1  
BOUNDARY WALL

**CONSTRUCTION OF BOUNDARY WALL AT  
SIBASA RESIDENCES FOR THE UNIVERSITY OF VENDA**

Item No		Quantity	Rate	Amount
	<b><u>SECTION NO.2</u></b>			
	<b><u>BILL NO.2</u></b>			
	<b><u>APRONS AROUND BUILDINGS</u></b>			
	<b><u>PREAMBLES</u></b>			
	For Preambles refer to "Department of Public Works: Specification of material and methods to be used - PW371"			
	<b><u>EARTHWORKS</u></b>			
	<b><u>EXCAVATION, FILLING, ETC</u></b>			
	<u>Excavation in earth not exceeding 2m deep</u>			
1	Excavate in pickable earth to reduce ground level below aprons and cart away excavated material to a dumping place not exceeding 1000mm from site	m3	70	
2	Rip and scarify ground level to a depth of 150mm and consolidate and compacting to 93% Mod AASHTO density at -2% to 1% OMC	m2	466	
	<u>Paving layers</u>			
	The following to be natural selected gravel layers evenly spread and consolidated in layers and dimensions as specified and on the drawings. All thicknesses to be consolidated thicknesses.			
	Where described as "imported" the gravel to be supplied and carted on by the contractor from an approved borrow pit			
3	150mm Imported G6 material including scarifying for a depth of 150mm, breaking down oversize material, adding suitable material where necessary and compacting to 93% Mod AASHTO density at -2% to 1% OMC	m3	70	
	<b>Carried to Collection</b>			R
	Section No. 2 EXTERNAL WORKS Bill No. 2 APRONS			



**CONSTRUCTION OF BOUNDARY WALL AT  
SIBASA RESIDENCES FOR THE UNIVERSITY OF VENDA**

	<u>Prescribed density tests on filling</u>			
4	"Modified AASHTO Density"	No	18	
	<b><u>SOIL POISONING</u></b>			
	<u>Soil insecticide to be executed with SABS compliance by a firm of specialists under a 5 year guarantee</u>			
5	Under floors etc, including forming and poisoning shallow furrows against foundation walls etc, filling in furrows and ramming	m2	466	
	<u>Weedkiller mixed in accordance to supplier's specifications</u>			
6	Under floors etc including forming and poisoning shallow furrows against foundation walls etc, filling in furrows and ramming	m2	466	
	<b><u>CONCRETE, FORMWORK AND REINFORCEMENT</u></b>			
	<b><u>REINFORCED CONCRETE CAST AGAINST EXCAVATED SURFACES</u></b>			
	<u>15MPa/20 mm concrete</u>			
7	Aprons cast in panels to falls	m3	47	
8	Extra over concrete in aprons for thickening 100mm deep, 300mm wide at top and tapering on one side to 100mm thick at bottom incl. of all excavations, cart away etc.	m	932	
	<b><u>CONCRETE SUNDRIES</u></b>			
	<u>Finishing top surfaces of concrete smooth with a wood float</u>			
9	Aprons to falls	m2	466	
	<b>Carried to Collection</b>			
	Section No. 2 EXTERNAL WORKS Bill No. 2 APRONS			R

**CONSTRUCTION OF BOUNDARY WALL AT  
SIBASA RESIDENCES FOR THE UNIVERSITY OF VENDA**

**TEST CUBES**

10	Allow for preparing a set of three concrete strength test cubes, each size 150 x 150 x 150mm, sending them to an approved Testing Laboratory for testing and paying all charges in connection therewith.	Sets	20
----	--	------	----

**SMOOTH FORMWORK (DEGREE OF ACCURACY II)**

Smooth formwork to sides

11	Edges, risers, ends and reveals not exceeding 300mm high or wide	m	932
----	--	---	-----

**MOVEMENT JOINTS ETC**

Silicone sealing compound including backing cord, bond breaker, primer, etc

12	10 x 15mm In isolation joints including raking out of expansion joint filler as necessary	m	932
----	---	---	-----

Silicone sealing compound including backing cord, bond breaker, primer, etc

13	10 x 10mm In expansion joints including raking out of expansion joint filler as necessary	m	932
----	---	---	-----

**REINFORCEMENT**

Fabric reinforcement

14	Steeledale Mesh standard square fabric mesh, nominal mass 1,93 kg/m <sup>2</sup> with nominal 5,6mm thick wires and 200 x 200mm pitch (code 193), complying with SANS 1024/2006 requirements cut 500mm wide	m	932
----	---	---	-----

**Carried to Collection**

Section No. 2  
EXTERNAL WORKS  
Bill No. 2  
APRONS

R

**CONSTRUCTION OF BOUNDARY WALL AT  
SIBASA RESIDENCES FOR THE UNIVERSITY OF VENDA**

Section No. 2

EXTERNAL WORKS

Bill No. 2

APRONS

**COLLECTION**

Total Brought Forward from Page No.

**Page  
No**

28

29

30

**Amount**

**Carried Forward to Summary of Section No. 2**

Section No. 2  
EXTERNAL WORKS  
Bill No. 2  
APRONS

R

**CONSTRUCTION OF BOUNDARY WALL AT  
SIBASA RESIDENCES FOR THE UNIVERSITY OF VENDA**

Item No	Quantity	Rate	Amount
<p><b><u>SECTION NO 5</u></b></p>			
<p><b><u>BILL NO 1</u></b></p>			
<p><b><u>PROVISIONAL AMOUNTS ETC</u></b></p>			
<p><b><u>PROVISIONAL SUMS FOR SELECTED SUB- CONTRACT WORKS</u></b></p>			
<p><b><u>SUPPLEMENTARY PREAMBLES</u></b></p>			
<p><u>General</u></p>			
<p>All prime cost amounts and provisional sums are net and include for delivery to site of all articles concerned</p>			
<p>Sub contractors will be treated as domestic sub contractors for the purpose of this contract. They shall be selected sub contractors and the main contractor will be afforded the opportunity to reject such sub contractors prior to appointment provided reasonable justification is given</p>			
<p><u>Profit</u></p>			
<p>Where stated, the contractor may allow for profit if required</p>			
<p><u>General attendance upon selected sub-contractors</u></p>			
<p>The item "Attendance" which follows each provisional sum for selected sub-contractors work, shall be deemed to cover all the contractor's costs incurred in providing free of charge to the selected sub-contractors, the following:</p>			
<p>1. The services as in clause B7 of the Preliminaries</p>			
<p>2. Making good in all trades and cleaning down and removal of rubbish on completion</p>			
<p align="right"><b>Carried to Collection</b></p>			
<p>Section No. 2 EXTERNAL WORKS Bill No. 3 PROVISIONAL SUMS</p>			
		R	

**CONSTRUCTION OF BOUNDARY WALL AT  
SIBASA RESIDENCES FOR THE UNIVERSITY OF VENDA**

Preliminaries

The contractor is referred to the Preliminaries for further amplification of "Prime Cost Amounts and Provisional Amounts"

Electrical Installation

- 1 Provide the sum of R100 000,00 (one hundred thousand rand) for Electrical Installation by Specialists
- 2 Allow for profit on above if required (Excluded from CPAP)
- 3 Allow for giving every facility to Specialist as described

Item

100 000.00

Item

Item

**Carried to Collection**

R

Section No. 2  
EXTERNAL WORKS  
Bill No. 3  
PROVISIONAL SUMS

**CONSTRUCTION OF BOUNDARY WALL AT  
SIBASA RESIDENCES FOR THE UNIVERSITY OF VENDA**

Section No. 2

EXTERNAL WORKS

Bill No. 3

PROVISIONAL SUMS

**COLLECTION**

Total Brought Forward from Page No.

**Page  
No**

32

33

**Amount**

**Carried Forward to Summary of Section No. 2**

Section No. 2  
EXTERNAL WORKS  
Bill No. 3  
PROVISIONAL SUMS

R

**CONSTRUCTION OF BOUNDARY WALL AT  
SIBASA RESIDENCES FOR THE UNIVERSITY OF VENDA**

Bill No	Section No. 2	Page No	Amount
	EXTERNAL WORKS		
	<b><u>SECTION SUMMARY - EXTERNAL WORKS</u></b>		
1	BOUNDARY WALL	27	
2	APRONS	31	
3	PROVISIONAL SUMS	34	
	<b>Carried to Final Summary</b>		R
	Section No. 2 EXTERNAL WORKS		

**FINAL SUMMARY**



**CONSTRUCTION OF BOUNDARY WALL AT  
SIBASA RESIDENCES FOR THE UNIVERSITY OF VENDA**

Section No	<u>FINAL SUMMARY</u>	Page No	Amount
1	PRELIMINARIES AND GENERAL	19	
2	EXTERNAL WORKS	35	
	Sub-total		R
	Sub Total 1		R
	CREDIT FOR ALL REUSABLE MATERIALS REMOVED FROM DEMOLITION WORKS	Item	
	Sub Total 2		R
	<b><u>CONTINGENCY SUM</u></b>		
	Sub Total 3		R
	Allow the amount of R100 000-00 (One hundred thousand rand) for Contingencies for building work, to be used as directed by the Project Manager and deducted in whole or in part if not required	Item	100 000.00
	Sub total (VAT EXCL.)		R
	Value Added Tax ( 15%)		R
	Sub Total (VAT INCL.) CARRIED TO TENDER FORM		R
	<b>Carried to Form of Tender</b>		R

**TENDER DRAWINGS**

Date	Revisions

cad file name  
REVIT 2021

**KIMS**  
ARCHITECTS  
19 MARSHALL STREET, JOHANNESBURG  
Gauteng, SOUTH AFRICA  
Tel: 011 551 366 2061  
Email: info@kimsarchitects.co.za  
www.kimsarchitects.co.za

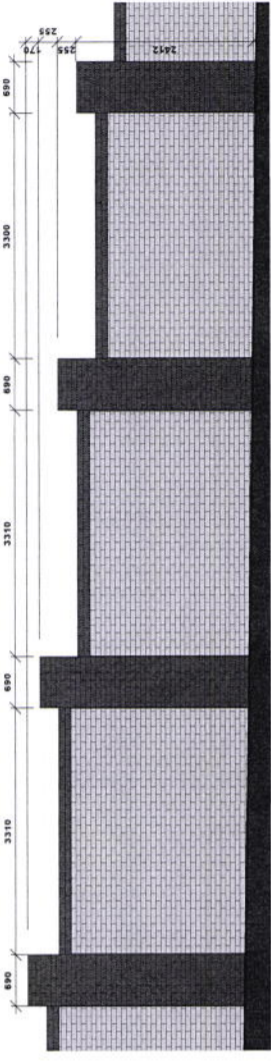
Client  
**University of Venda**  
Creating Future Leaders

Service  
SITE PLAN

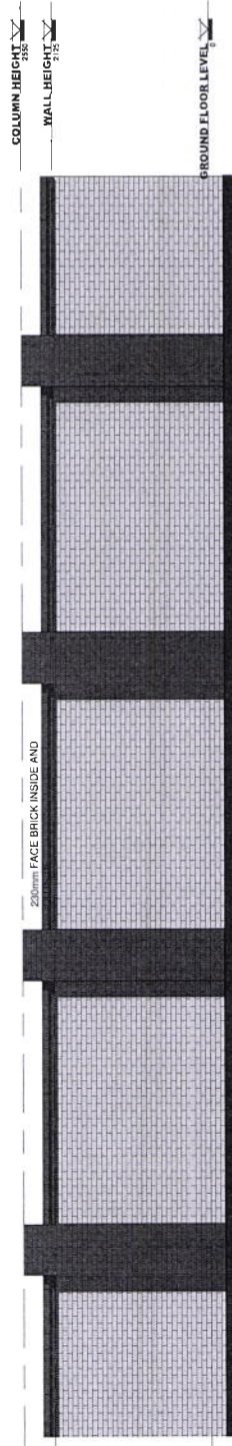
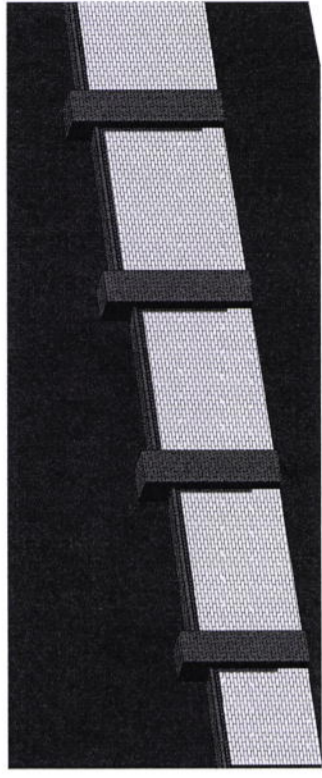
Site  
PROPOSED BOUNDARY WALL AT REF 22442  
SIBASA FOR UNIVERSITY OF VENDA

Drawing title  
PLAN, SECTION, ELEVATIONS, SCHEDULE

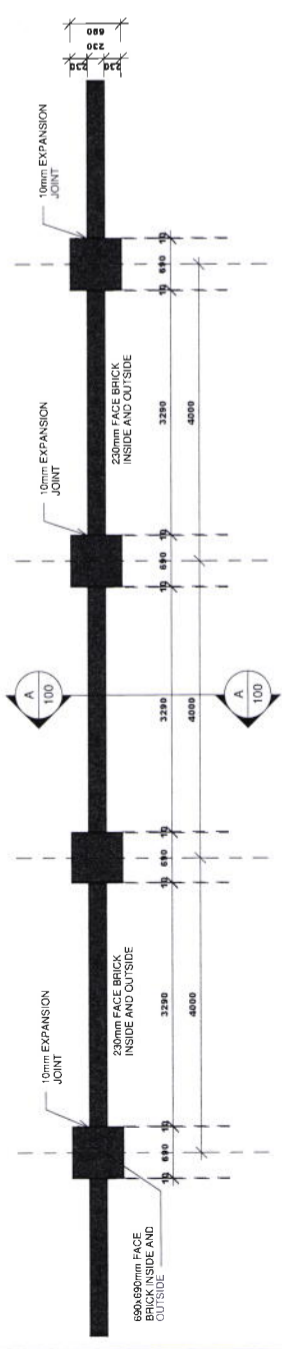
ref no	Project Number	designed by	T.M
scale	As indicated	drawn	T.M
date	2023/03/08 08:31:08	checked	P.M
drawing number	100		



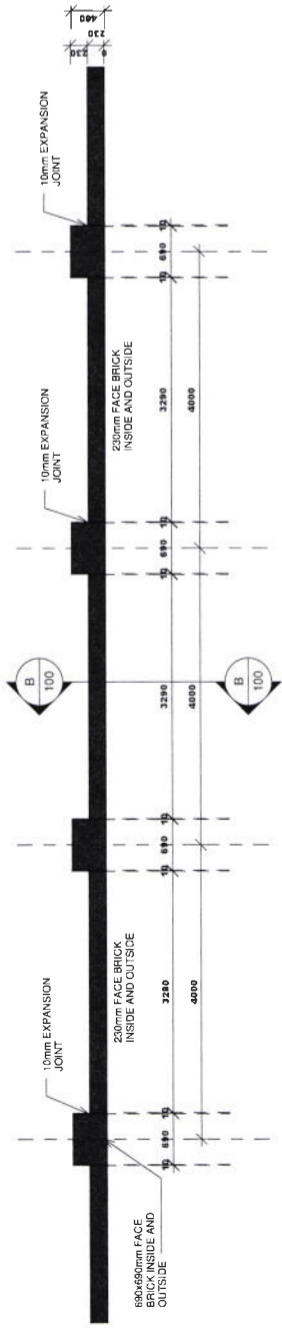
SECTION BB  
SCALE 1 : 50



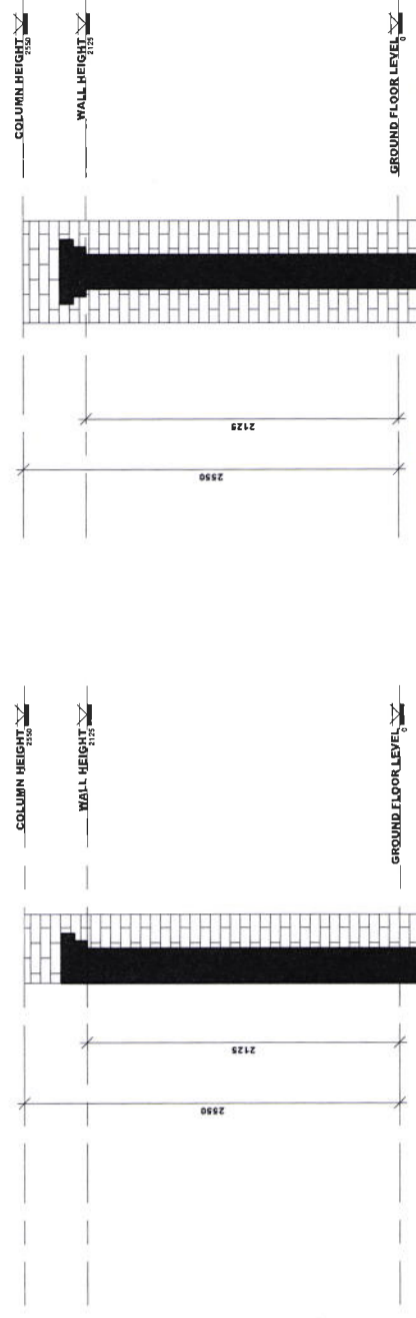
WALL ELEVATION  
SCALE 1 : 50



STREET FRONTAGE WALL FLOOR PLAN  
SCALE 1 : 50



NEIGHBOURING WALL FLOOR PLAN  
SCALE 1 : 50



SECTION A  
SCALE 1 : 25

SECTION B  
SCALE 1 : 25

cad file name  
REVIT 2019

**KIM S**  
ARCHITECTS

100 MARSHALL STREET, KRUGER  
CENTRAL  
CAPTOWN 7991, 7995  
Email: [sahm@kimsarch.co.za](mailto:sahm@kimsarch.co.za)  
Website: [www.kimsarch.co.za](http://www.kimsarch.co.za)

POLOKWANE

Client



University of Venda  
Creating future leaders

Service

SITE PLAN

Site

PROPOSED BOUNDARY WALL AT ERF 224/42  
SIBASA FOR UNIVERSITY OF VENDA

drawing title  
SITE PLAN

ref. no	Project Number	designed	Designer
scale	1:500	drawn	Author
date	2023/03/06 09:37:29	checked	Checker
drawing number	001		





